



Lean manufacturing

[www.LeanProducts.eu](http://www.LeanProducts.eu)

# PUDU Commercial Cleaning Robots

Product Brochure



LinkedIn

YouTube

Facebook

TikTok

Instagram

X



Search Pudu Robotics

[www.pudurobotics.com](http://www.pudurobotics.com)

[global\\_sales@pudutech.com](mailto:global_sales@pudutech.com)

Room 1101, Building 3, Shenzhen International Innovation Valley, Dashi 1st Road, Xili Community, Xili Street, Nanshan District, Shenzhen, China

PD-CR\_V1.1\_20260417\_EN

Greater Efficiency, Less Burden,  
Driven by Value.



### PUDU SH1

Smart Upright Scrubber Dryer



### PUDU MT1 Max

AI-powered 3D Perception Robotic Sweeper



reddot winner 2023

### PUDU CC1

Intelligent Commercial Cleaning Robot



### PUDU BG1 Pro

AI-Native Large Scrubber-Dryer Robot



### PUDU BG1

AI-Native Large Scrubber-Dryer Robot



### PUDU MT1 Vac

AI-powered Robotic Sweeper & Vacuum



reddot winner 2025



### PUDU MT1

AI Powered Robotic Sweeper



### PUDU CC1 Pro

AI-powered Autonomous Cleaning Robot

# Leading with technology, powered by innovation, shaping the future of commercial cleaning robots.

## Technology Leader in global commercial cleaning

8 Key Technological Advantages:



**AI Magic Cleaning**  
Cleans where it's dirty, auto-adjusting for different debris.



**Lidar + 3D VSLAM**  
Ensures stable localization and path planning in complex environments.



**Full Environmental Awareness**  
Safe operation in high-risk areas like parking lots and outdoors.



**Sweeping & Scrubbing in One Pass**  
Handles dry and wet cleaning without manual pre-sweeping.



**Extendable Flexiarm**  
Industry-first, ensures edge-to-edge cleaning with no missed spots.



**Dual-Action Cleaning**  
Cleans twice (sweeping & scrubbing intergration) in a single pass for a spotless result.



**Fully Automatic & Self Cleaning**  
Reduces manual maintenance and keeps the robot ready at all times.



**One-Click Start**  
Multi-modal interaction enables instant operation anytime, anywhere.

## All Scenarios Cultivator in global commercial cleaning

**Top 1**

Shipment Volume

**Top 1**

Country Coverage

**Top 1**

Industry Coverage

Beyond retail, hospitality, and real estate & property services, we also maintain a strong presence in high-barrier sectors like healthcare and education.

Leading in global shipments, present in many countries and industries, PUDU commercial solutions extend beyond traditional scenarios into high-barrier sectors like healthcare and education, setting a new benchmark for intelligent service terminals.



## Global Commercial Cleaning – Ecosystem Builder

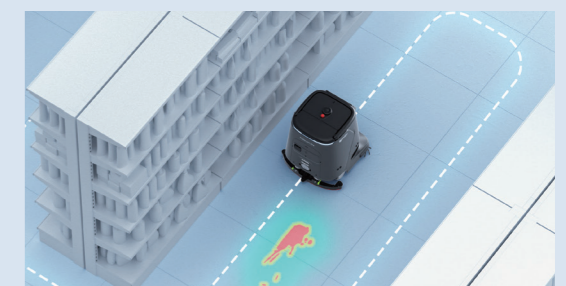
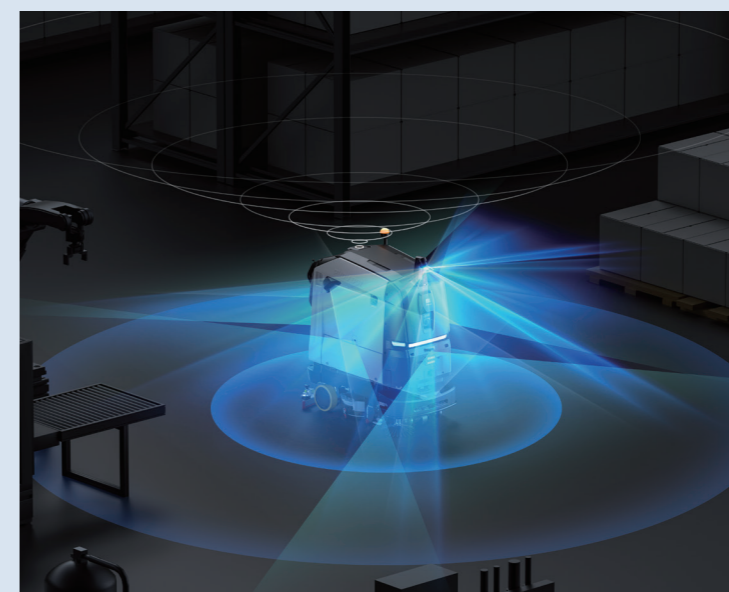
From small retail stores to major transit hubs, across indoor and outdoor environments, PUDU robot delivers precise and consistent performance. Supporting both dry and wet applications, and backed by a broad product lineup, they provide tailored solutions for diverse operational needs.

# Pudu Robotics: Defining the Era of AI-Native Cleaning.

Precisely executed "Hardware Degrees of Freedom"



Ever-evolving "AI Degrees of Freedom"

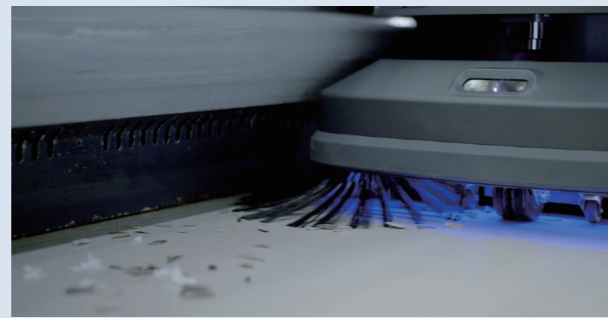


# Empower productivity with commercial cleaning robot, freeing people to focus on what truly matters.



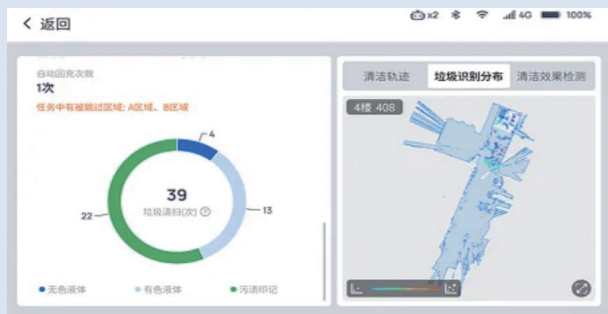
## Ready at All Times

PUDU cleaning robots reduce the burden of recruitment, complex shift scheduling, rising night labor costs, and inconsistent execution. Operating 24/7 with standardized workflows, they deliver stable, repeatable cleaning performance.



## Consistent High Cleaning Performance

Powered by AI-driven navigation and pre-configured maps, the PUDU robot automatically plans efficient routes to ensure full coverage—from corners and corridors to large open areas. Each square meter is cleaned to a defined standard, reducing missed spots and inconsistent cleaning.



## Every Clean, Fully Traceable

Cleaning progress is monitored in real time, with routes automatically recorded and reports generated instantly. Tasks are traceable, results are verifiable, and performance is measurable—providing clear operational transparency.



## Empowering ESG for a Sustainable Future

PUDU robots boost operational efficiency while enhancing a modern brand image. With energy-efficient performance and digital management, they support sustainability goals and ESG initiatives. Features like mobile advertising and system integration further extend their commercial value beyond cleaning.

# Select the most suitable cleaning robot

## Scrubbing



### PUDU BG1 Pro

World's first AI-native Large Scrubber-Dryer Robot Pro  
Ideal for Parking lots and other large-area deep cleaning



### PUDU BG1

World's first AI-native large scrubber-dryer robot  
Ideal for 2500-10000+m² cleaning area, stubborn stain removal



### PUDU CC1 Pro

World's first AI scrubbing robot  
Ideal for 500-2,000m² indoor areas, effortlessly removes stubborn floor stains.



### PUDU CC1

4-in-1 cleaning robot  
Ideal for 500-1,500m² indoor areas, effortlessly handles daily floor cleaning.



### PUDU SH1

Small multifunctional scrubber dryer  
Ideal for small, high-traffic indoor areas such as restaurants and restrooms.

## Sweeping



### PUDU MT1

World's first AI sweeping robot  
Ideal for 500-25,000m² indoor areas, effortlessly handles all types of bulky debris.



### PUDU MT1 Max

AI sweeping robot for complex scenarios  
Ideal for 500-25,000m² garages, outdoor areas, and other complex spaces, effortlessly handles bulky debris.

## Carpet Vacuuming



### PUDU CC1

4-in-1 cleaning robot  
Ideal for 500-1,500m² indoor areas, effortlessly handles daily floor cleaning.



### PUDU MT1 Vac

AI dry-cleaning robot for large-scale spaces  
Ideal for 500-2000m² carpeted areas, effortlessly handles daily vacuuming.

## Hard-floor/Vacuuming & Dust-mopping



### PUDU MT1 Vac

AI dry-cleaning robot for large-scale spaces  
Ideal for 500-2000m² carpeted areas, effortlessly handles daily vacuuming.

# PUDU BG1 Series

## AI-Native Large Scrubber-Dryer Robot



One-Pass Sweep & Scrub



Extendable Edge Cleaning



Instant, User-friendly Maintenance



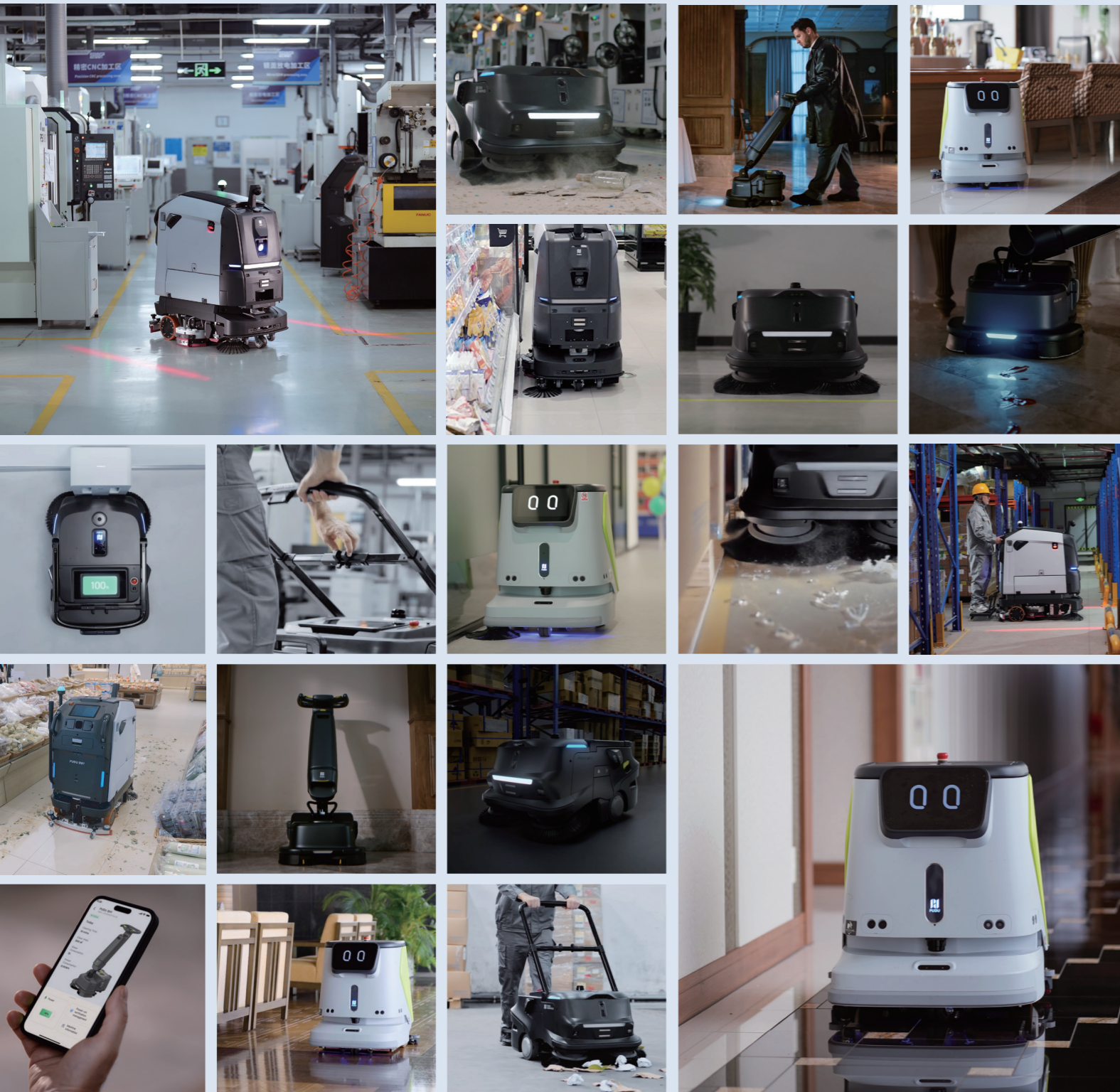
AI Magic Cleaning



3D Perception Enhancement



24/7 Continuous Operation



Features



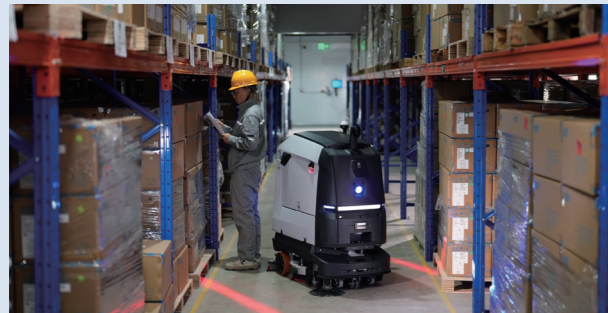
**Extendable Edge Cleaning**

The scrubbing brush can physically extend to reach walls and shelving edges, thoroughly removing dust and dirt along edges, improving coverage, and minimizing manual touch-ups.



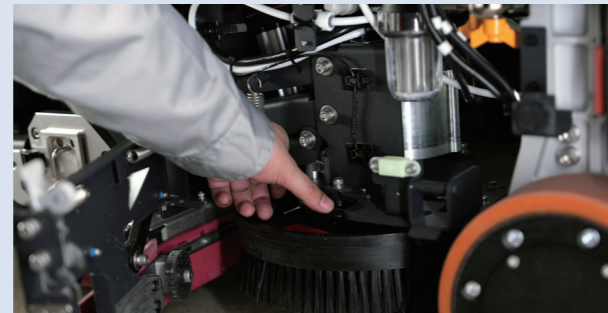
**One-Pass Sweep & Scrub**

Combine sweeping and deep scrubbing into one efficient workflow. Featuring smart dosing, superior down pressure, and an ultra-wide path clearance to cover more ground in less time.



**3D Perception Enhancement**

The BG1 Series maps accurately and dodges obstacles in real time. It ensures reliable, efficient cleaning - even in dark, high-ceiling, or high-interference environments.



**Instant, User-friendly Maintenance**

The PUDU BG1 Series features automatic disc-brush attachment, eliminating manual positioning and setup. Coupled with a user-friendly snap-on design for all critical consumables, routine maintenance can be completed in under 1 minute.



**24/7 Continuous Operation**

The all-in-one station automates refilling, drainage and charging, ensuring 24/7 mission-readiness.



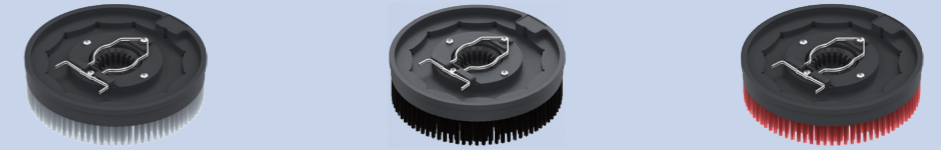
**Human-Robot Interaction**

Ride-on Mode: Deploy the platform for instant manual control. It accelerates site mapping and long-distance transitions, ensuring rapid response to unforeseen situations beyond autonomous operation.

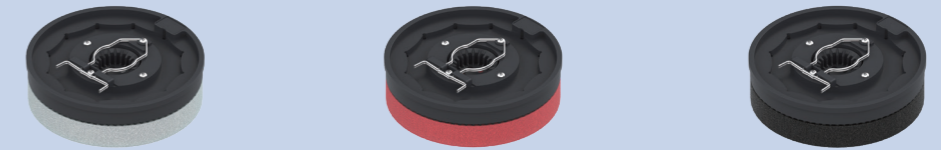
BG1 Series Accessories

Consumables

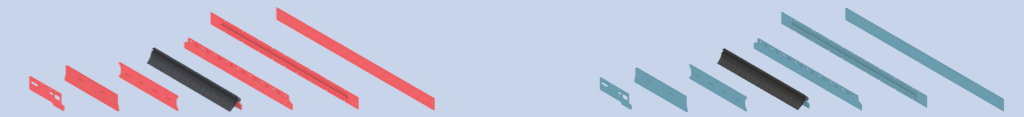
Scrubbing Disc Brush



Scouring Pad



Rubber Blade



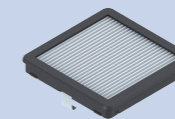
Side Brush



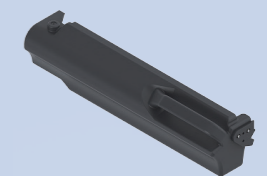
Roller Brush



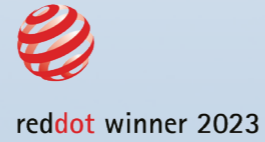
Fan Filter



Trashbin



# PUDU CC1



## Intelligent Commercial Cleaning Robot

- 4-in-1 Versatile Cleaning
- Auto Power Charging & Auto Water Addition and Drainage
- Diversified Brushes
- Mobile Water Tank No Plumbing Modification
- Dynamic Space Perception
- Self-cleaning & Maintenance



### Features



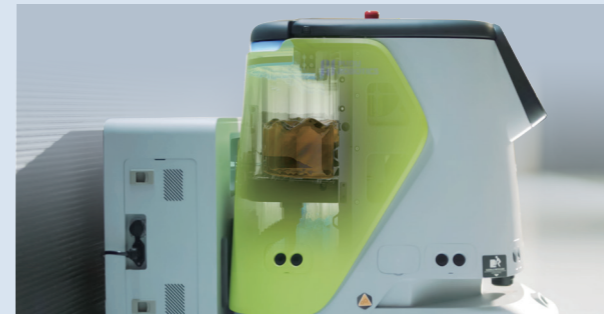
#### 4-in-1 Versatile Cleaning

Sweeping, scrubbing, vacuuming, and dust mopping functions in one.



#### Dual Scrubbing Brushes

Superior cleaning performance with dual scrubbing brushes.



#### 24/7 Continuous Operation

24/7 continuous operation enabled by self-cleaning and maintenance systems, including automated docking stations, self-cleaning modules, and mobile water tank.



#### Manual Mode + PUDU Link

Effortless control via an extendable steering handle and real-time mobile management.



#### Measurable Cleaning

Cleaning results are clearly visible in the automatically generated reports.









#### Dynamic Space Perception

Ideal for environments that frequently change, with the ability to perform real-time route planning and intelligent touch-ups based on the current surroundings.

# PUDU CC1 Pro

## Ultimate AI Cleaning Robot

-  AI Magic Cleaning
-  AI Adaptive Cleaning
-  AI Spot Cleaning
-  Real-Time Cleaning Performance Feedback
-  AI Fusion Perception
-  IEC 63327 Certification



### Features



#### Powered by the Magic Cleaning AI System

Deep integration of hardware and software. Sensors, hub motors, side brushes, and roller brushes work in sync to enable AI adaptive cleaning, AI trash detection, guided cleaning and AI spot cleaning.



#### AI Adaptive Cleaning

Automatically adjusts cleaning modes based on conditions. Ensures thorough removal of stubborn stains.



#### AI Spot Scrubbing, 3x Efficiency

Detects common wet stains in real time, such as coffee and spills, and dynamically plans the optimal cleaning path.



#### Cleaning Heatmaps & Measurable Cleaning

Debris Detection Heatmap: Reveals where debris accumulates, helping optimize cleaning deployment. Cleaning Performance Heatmap: Marks areas with persistent stains after multiple passes, enabling targeted follow-up and manual intervention.



#### Autonomous Cleaning Strategy & Smart Re-cleaning

Instant Response: replans routes within 1 second. No idle waiting - cleaning continues without interruption. Smart Re-cleaning: automatically returns to missed areas after obstacles are cleared, ensuring full coverage.



#### Guided Cleaning for Efficient Human-Robot Collaboration

3 Steps to Handle Stubborn Stains:  
 Detection: generates real-time heatmaps to locate residual dirt  
 Reporting: records missed areas with precise location data  
 Closed-Loop Execution: guides staff directly to target spots for efficient resolution

CC1 Series Accessories

Docking Station/Self-Cleaning



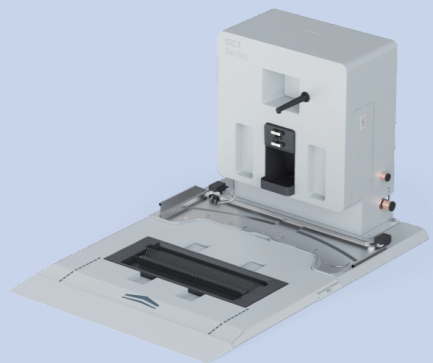
**Docking Station**

Supports automatic charging, water supply and drainage, and detergent addition.



**PUDU Mobile Water Station**

Portable "Water Charging Bank"  
No modifications to the plumbing are necessary.  
Intelligent monitoring with timely water change alerts.  
User-Friendly "Trolley Case" Design

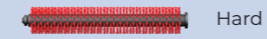


**PUDU Self-Cleaning Docking Station**

Supports automatic self-cleaning, charging, water supply and drainage, and detergent addition.

CC1 Series Accessories

Consumables



Hard



Soft

Scrubbing Brush



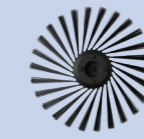
Sweeping & Scrubbing Brush



Sweeping Brush



Side Brush



Side Brush(longer version)



Dust Mopping Cloth



Squeegee



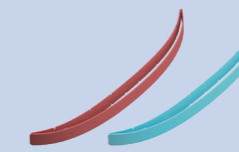
Carpet Vacuuming Modular



Dust Mopping Modular



Scrubbing Brush



Scrubbing Squeegee Rubber Strips



Dust Mopping Rubber Strips

Customized



Ad Screen



Warming Lamp



IOT: Lift Control/E-door



Customized Skin

# PUDU MT1

## AI Powered Robotic Sweeper

-  No Debris Too Big or Small
-  AI Trash Recognition
-  AI Spot Cleaning
-  24/7 Continuous Operation
-  Rapid Adaptation to Changing Environments
-  User-Friendly Design

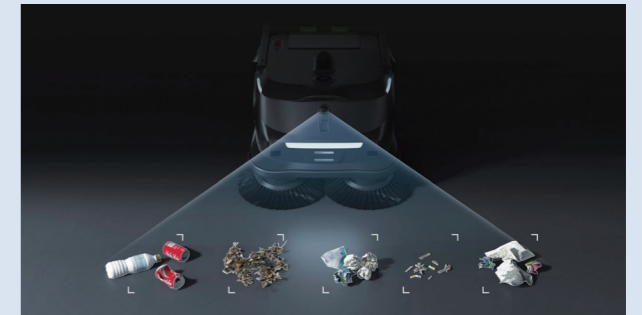


### Features



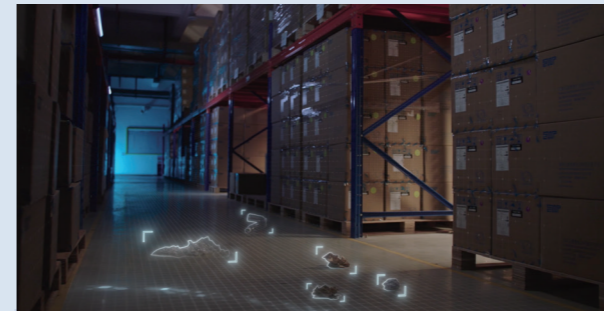
#### No Debris Too Big or Small

The dual-disc brushes easily handle larger debris like leaves and bottles, while efficiently sweeping up fine dust and dirt to ensure no small particles are left behind.



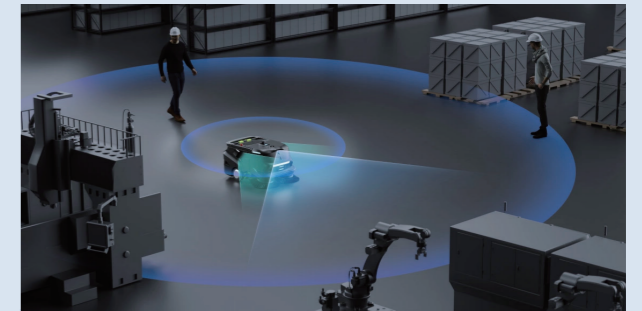
#### AI Magic Cleaning

Hardware-software integration synchronizing sensors, hub motors, side brush motors, and roller brush motors to enable AI adaptive cleaning, AI trash recognition, and AI spot cleaning.



#### 3D VSLAM

Equipped with a 3D perception system, PUDU MT1 maps environments accurately, detects obstacles in real time, and navigates efficiently even in high ceilings, nighttime, or heavy interference, ensuring reliable performance in complex cleaning tasks.



#### Omnidirectional Perception

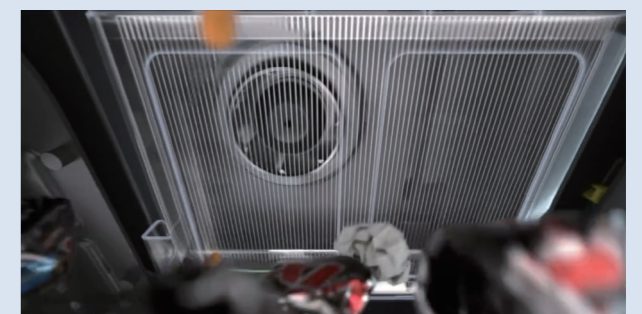
With three-dimensional depth perception and multi-sensor fusion for navigation and obstacle avoidance, the MT1 navigates complex spaces with ease.



#### AI Spot Cleaning

##### 5x Efficiency Increase

Targeted and Precise: the PUDU MT1 features an ultra-wide scanning field of view, effortlessly covering large areas. During the routine patrols, it accurately detects and efficiently cleans up waste, making cleaning smarter and more convenient.



#### Active Dust Control

Utilizes high-flow negative pressure ventilation and an efficient filter to trap particles in the debris box, effectively preventing secondary pollution.

# PUDU MT1 Vac

## AI-powered Robotic Sweeper & Vacuum



Powerful Suction



High Efficiency



Extended Run-time



AI-driven Adaptive Cleaning



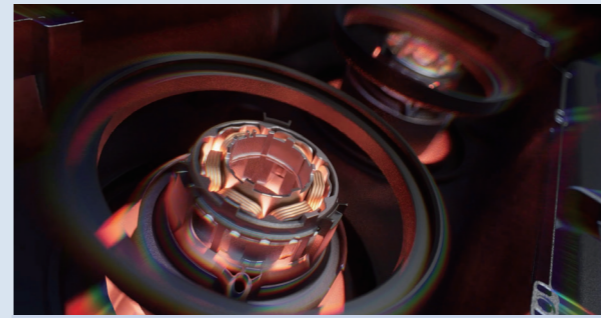
Quick-Release Dust Mop Module



Hand-vacuum Extension



### Features



#### Double Efficiency

Dual-fan deep vacuuming: Equipped with a new dual independent air duct system, boosting suction efficiency by 200%.



#### For Both Carpet and Hard Floors

AI-powered floors recognition identifies carpet and hard floors in real time, automatically adjusting suction and brush speed to protect delicate surfaces.



#### 24/7 Continuous Operation

With a large battery, fast-charging system, and charging station, the MT1 Vac supports 24/7 operation.



#### Easy Maintenance, Tool-Free Swaps

Quick-release modular design allows tool-free replacement of most cleaning components in seconds. The dust mop can be removed and deployed flexibly to suit different cleaning needs.



#### Dust and Waste Separation

6L trash bin + 14L dust bags: The large-capacity system handles large-area cleaning in a single run, significantly reducing the need for frequent emptying.



#### Hand-vacuum Extension

Hand-vacuum extension allows cleaning of sofa sides, walls, and glass surfaces. Flexible reach for edges, high surfaces, and soft furnishings.

# PUDU MT1 Max

## AI-powered 3D Perception Robotic Sweeper



3D Perception Integration



Magic Cleaning



Intelligent Active Interaction



Empty the Facility of Any Dirt & Trash



24/7 Continuous Operation



AI Adaptive Cleaning



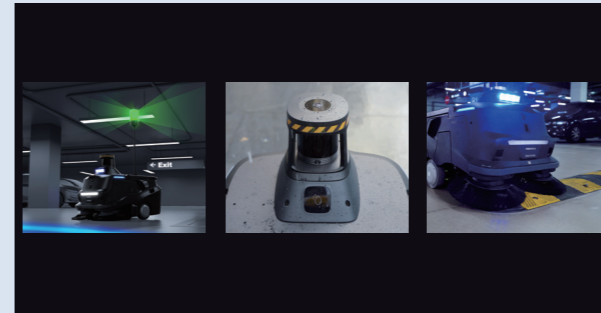
Covers Up to 100,000m<sup>2</sup>



Smart Obstacle Avoidance Upgrade

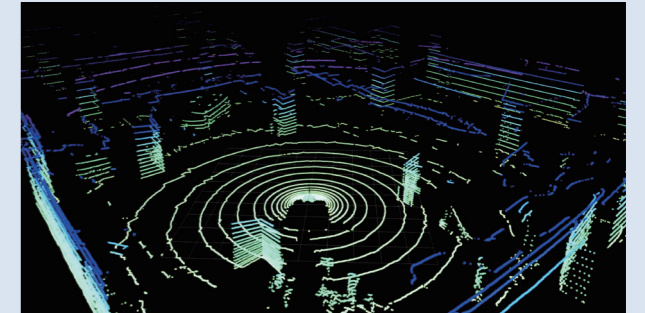


### Features



#### Intelligent Active Interaction

With both structural protection and smart response systems, the MT1 Max can actively perceive and adapt to its surroundings.



#### 3D Perception Enhancement

Equipped with a 3D perception system (3D LiDAR + multi-sensor fusion), MT1 Max maps environments accurately, detects obstacles in real time, and navigates efficiently even in high ceilings, nighttime, or heavy interference, ensuring reliable performance in complex cleaning tasks.



#### No Debris Too Big or Small

Empty the facility of any dirt & trash



#### Magic Cleaning

MT1 Max's dual-chip design with hardware-software synergy powers adaptive cleaning, trash recognition, spot cleaning, and more.



#### AI Adaptive Cleaning Strategy

Adaptive cleaning slows brushes rotation for light debris to prevent scattering, speeds them up for heavier waste, and adjusts body angle to guide debris into the dual-brush gap for effective pickup.



#### Smart Obstacle Avoidance

MT1 Max features multiple avoidance strategies, proactively yielding to vehicles. Pedestrian and Animal Avoidance: Quickly reacts to sudden "pop-out" movements.

MTI Series Accessories

Charging Station



Charging Station



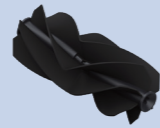
Consumables/Accessories



Sweeping Side Brush



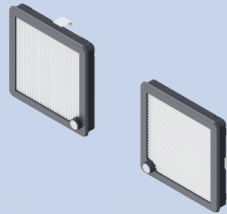
Sweeping Roller Brush



Rubber Roller Brush  
(Easy-clean Design)



Detachable Roller Brush



High-efficiency Filter (H11/H13)



Forklift Safety Light



Elevated Warning Lights

# PUDU SH1

## Smart Upright Scrubber Dryer



Expert in Tough Stain Removal



Air-liquid-debris Separation



Multi-dimensional Cleaning



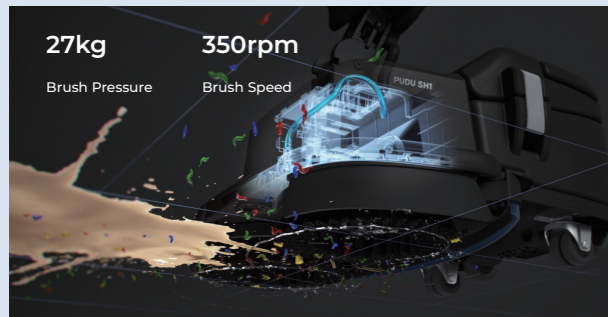
Measurable Cleaning



Real-time Components Monitoring



Features



Leave no mess behind

Compared to a conventional mop, SH1 saves 80% on water and cleaning agent usage and reduces cleaning time by 70%.



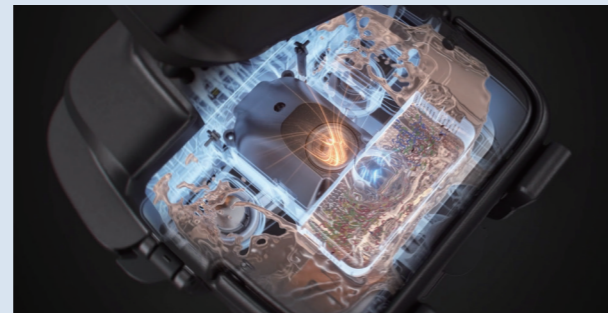
Touch Screen Interface

Featuring a 4.2-inch touch screen, enhanced with visual and audio cues for an innovative interactive experience.



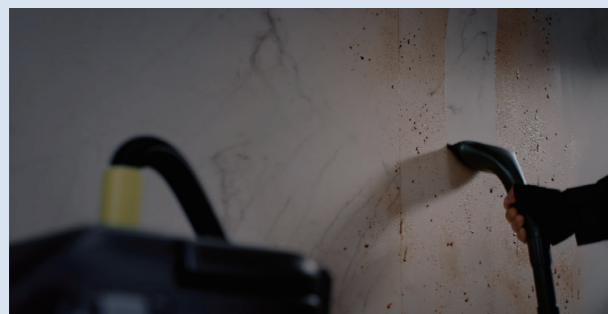
Multidimensional Cleaning

Equipped with innovative accessories, the PUDU SH1 excels at cleaning vertical surfaces, effectively removing grime from glass display cases, tiled walls, mirrors, and windows with ease and precision.



Air-Liquid-Debris Separation

The PUDU SH1 features a first-to-market wastewater tank with an air-solid-liquid separation system, effortlessly separating gases, liquids, and solid particles, facilitating a smooth disposal process for both wet and dry refuse, and eliminating the risk of drain blockages.



Multi-dimensional Cleaning

Equipped with innovative accessories, the PUDU SH1 excels at cleaning vertical surfaces, effectively removing grime from glass display cases, tiled walls, mirrors, and windows with ease and precision.

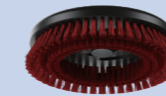


PUDU Cleaning Report

Receive post-cleaning notifications that offer insights into your cleaning session. You'll get detailed reports on the duration of cleaning, water usage, and the area cleaned, giving you a comprehensive overview of your cleaning performance after the job is done.

SH1 Series Accessories

Scrubbing Disc Brush



Hard

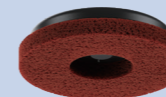


Standard

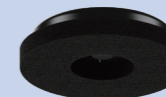


Soft

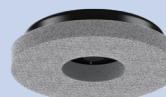
Scouring Pad



Hard

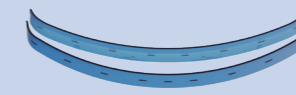


Standard

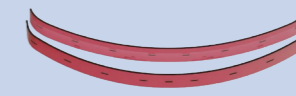


Soft

Rubber Blade



Blue Rubber Blade



Red Rubber Blade

Vertical Cleaing



Cleaning Suit

Product Specifications Overview

										
Product Name	CC1	CC1 Pro	MT1	MT1 Vac	MT1 Max	BG1 Pro	BG1	SH1		
Machine Dimensions	629×552×695 mm		840×600×490mm			840×600×675mm		1195×760×1303mm	490×530×1200mm	
Machine Weight	75kg		74kg	73kg	81kg	Approx. 344kg		27kg		
Navigation Mode	Laser + VSLAM + Marker		Laser + VSLAM + Marker			3D Laser + 3D VSLAM Fusion		3D Laser + 3D VSLAM Fusion	Laser + 3D VSLAM Fusion	N/A
AI Cleaning	Not Supported	AI Magic Cleaning, AI Spot Cleaning, AI Adaptive, AI Smart Refill, AI Heat Map, Guided Cleaning	AI Magic Cleaning, AI Spot Cleaning, AI Adaptive, AI Smart Refill, AI Heat Map, Guided Cleaning			AI Magic Cleaning, AI Spot Cleaning, AI Adaptive, AI Smart Refill, AI Heat Map, Guided Cleaning		AI Magic Cleaning, AI Spot Cleaning, AI Adaptive, AI Smart Refill, AI Heat Map, Guided Cleaning		N/A
Sensors	Lidar, VSLAM Cam ×1, RGBD ×2, RGB ×2, Line Laser ×3		Lidar, VSLAM Cam ×1, RGBD ×3, RGB ×2, Line Laser ×2			3D Lidar, VSLAM Cam ×1, RGBD ×3, RGB ×2, Line Laser ×2		3D Lidar, VSLAM Cam, RGBD, RGB, Line Laser	Lidar, VSLAM Cam, RGBD, RGB, Line Laser	N/A
Cleaning Methods	Scrub, Sweep, Vacuum, Dust-mop		Sweep, Vacuum, Dust-mop			Sweep, Scrub, Dust-mop, Polish		Sweep, Scrub, Dust-mop, Polish		Scrub
Cleaning Efficiency	700-1000m <sup>2</sup> /h	Covered Cleaning: 700-1000m <sup>2</sup> /h; Spot Cleaning: 1500-3000m <sup>2</sup> /h	Covered Cleaning : 1800m <sup>2</sup> /h; Spot Cleaning : 6000m <sup>2</sup> /h	Covered Cleaning (Vacuum): 1400m <sup>2</sup> /h; Spot Cleaning (Sweep): 1800m <sup>2</sup> /h	Covered Cleaning : 2200m <sup>2</sup> /h; Spot Cleaning : 7000m <sup>2</sup> /h	Covered Cleaning Mode: 2000m <sup>2</sup> /h; Spot Cleaning Mode: 6000m <sup>2</sup> /h			1100-1600m <sup>2</sup> /h	
Cleaning Width	50cm		70cm			55cm		49cm		
Water Tank Capacity	Clean water 15L / Dirty water 15L		N/A			Clean water 75L / Dirty water 60L		Clean water 4L / Dirty water 4L		
Dustbin Capacity	0.45L		35L	8L	35L	5L		N/A		
Dust Bag Capacity	2.5L		35L (Shared with Trashbin)		14L	35L (Shared with Trashbin)		5L (Shared with Trashbin)		N/A
Battery Life	5-9h		4-8h	3-6.5h	6.5-10h	7.5h		70-100min		
Maximum Obstacle Height	20mm		20mm			50mm (Speed bump)		70mm (Speed bump)	25mm	N/A
Min. Path Clearance	70cm		75cm			85cm		N/A		
Charging Time	< 3.5h		Approx. 3h	< 3.5h		Approx. 3h		2.5h		



## PUDU ROBOTICS

Pudu Robotics, a **global leader in the commercial service robotics sector**, is dedicated to empowering easier work and better lives through AI and robotics, with a vision of building a global intelligent robotics infrastructure that serves 10 billion people worldwide.

Built on three core technologies—**mobility, manipulation, and AI**—Pudu Robotics has pioneered an industry-first **"One Brain, Multiple Embodiments"** architecture, establishing a comprehensive product portfolio that includes **specialized, semi-humanoid, and humanoid robots**.

Currently, Pudu offers four major product lines: **service delivery, commercial cleaning, industrial delivery and general embodied AI**. Its solutions are widely deployed across industries such as **retail, hospitality, manufacturing and industrial facilities, food and beverage, real estate and property services, healthcare, entertainment and sport, education, and public services**.

To date, Pudu Robotics has **shipped over 120,000 units** globally, with a presence in **more than 80 countries and regions**.

### Global Leader in Commercial Service Robotics

**TOP 1**

Global Market Share \*

**120,000+**

Shipped Globally

**700+**

Global Distributors

**80+**

Countries and Regions Covered

**1000+**

Cities Covered

**40,000+**

End Customers

\* Source: Market Research on Global Commercial Service Robotics (2023) by Frost & Sullivan



Lean manufacturing

[www.LeanProducts.eu](http://www.LeanProducts.eu)



#### Global Patents and Trademarks

Pudu Robotics holds **1,842 global patents**, including pending applications. Additionally, we have **1,353 global trademark** registrations spanning **over 50 countries and regions**.

#### Global Certifications



\* Relevant statistics as of March 2026